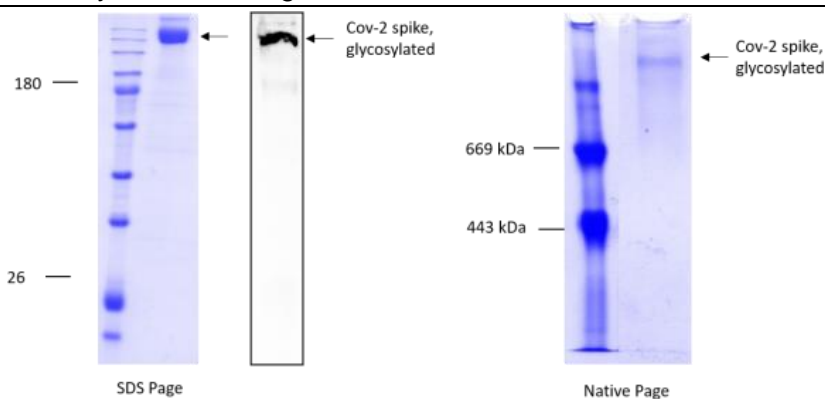


# Datasheet

## Trimeric SARS-CoV-2 Spike Antigen, Full-length

<b>Catalogue No:</b>	BSV-COV-PR-33	BSV-COV-PR-34	BSV-COV-PR-35
<b>Pack Size:</b>	100 µg	1 mg	10 mg
<b>Product Name:</b>	Trimeric SARS-CoV-2 Spike Antigen, Full-length		
<b>Description:</b>	Full-length SARS-CoV-2 Spike Protein is a single span transmembrane protein which contains the Spike Protein amino acids 1-1273. Full length SARS-CoV-2 Spike Protein is manufactured in HEK293 mammalian cells, ensuring the most authentic post-translational modifications.		
<b>Species:</b>	2019-nCoV, COVID-19		
<b>Sequence:</b>	Full-length sequence (aa 1 – 1273), furin cleavage site “RRAR” mutated to “GSAG”		
<b>Accession No.:</b>	YP_009724390.1 (GenBank), P0DTC2 (UniProt).		
<b>Host:</b>	Expressed in HEK293 Expi cells		
<b>Applications:</b>	Elisa assays, Ligand binding assays (e.g. SPR), Biochemical and Biophysical analyses		
<b>Purity:</b>	>98% by SDS-PAGE gel		

### Predicted Molecular Mass:



1,286 amino acids, 142 kDa. Size, purity and oligomerization state of CoV-2 spike protein assessed by SDS-PAGE, Western Blot and Native-PAGE. Native PAGE shows no aggregation.

For UK, Europe and ROW orders:

**BioServUK**  
Calibre Scientific UK  
Unit 5A, R-Evolution @  
The Advanced Manufacturing Park  
Selden Way  
Rotherham  
S60 5XA  
+44 114 224 2257  
info@bioservuk.com



For Americas Orders:

**Anatrace**  
434 West Dussel Drive  
Maumee, OH 43537  
+1 800 252 1280  
customerservice@anatrace.com

Version 1.2

<b>Formulation:</b>	Liquid – Purified protein (1 mg/ml) supplied in 20 mM Hepes pH 7.5; 150 mM NaCl, 0.001% LMNG
<b>Endotoxin:</b>	Endotoxin levels is <0.1 ng/μg of protein (<1 EU/μg)
<b>Shipping, Storage &amp; Stability:</b>	The product is shipped with dry ice. Upon receipt, unopened vial can be stored at -80°C for over 12 months. Avoid repeated freeze-thaw cycles.
<b>Background:</b>	Coronavirus enters the host cell mediated by the transmembrane spike glycoprotein binding to the host ACE2 protein. This spike (S) protein is comprised of homotrimers with two functional subunits (S1 and S2). The trimeric protein also contains an S2' site which is cleaved by host proteases just upstream of the fusion peptide, activating membrane fusion. The structure of the SARS-CoV-2 protein has been solved and shown to bind very tightly to the human ACE2 protein. Further investigation of the relationship between this viral and host protein will provide insight into therapeutic and diagnostic development for COVID-19.

**FOR RESEARCH USE ONLY**

For UK, Europe and ROW orders:

**BioServUK**  
Calibre Scientific UK  
Unit 5A, R-Evolution @  
The Advanced Manufacturing Park  
Selden Way  
Rotherham  
S60 5XA  
+44 114 224 2257  
info@bioservuk.com



For Americas Orders:

**Anatrace**  
434 West Dussel Drive  
Maumee, OH 43537  
+1 800 252 1280  
customerservice@anatrace.com

**Version 1.2**