

## Datasheet

### Anti-SARS-CoV-2 Antibody (Clone# 6F10)

Product Name	Anti-SARS-CoV-2 Antibody (Clone# 6F10)
Catalogue Number	BSV-COV-AB-08
Clone, Isotype	Monoclonal 6F10, IgG
Concentration	1 mg/ml
Format	IgG
Tested Applications	WB, IHC, Indirect ELISA, Sandwich ELISA

### Description:

Mouse monoclonal antibody to detect Coronavirus disease-19 (COVID-19/SARS-CoV-2) nucleoprotein. The antibody has minimum cross reactivity with nucleoproteins from SARS and MERS. Purified from ascites by Protein G column, > 95% based on SDS-PAGE

### Product Details:

**Form in stock:** 50 mg

**Host:** Mouse

**Immunogen:** Synthetic peptide targeting amino acids 300-400 of SARS-CoV-2 nucleoprotein.

**Buffer:** In 0.01 M Tris-HCl, pH 8.0, 0.15 M NaCl, 0.02% sodium azide.

**Purity:** Purified by antigen-affinity chromatography.

**Conjugation:** Unconjugated

**Alternative names:** COVID-19 COV-2.

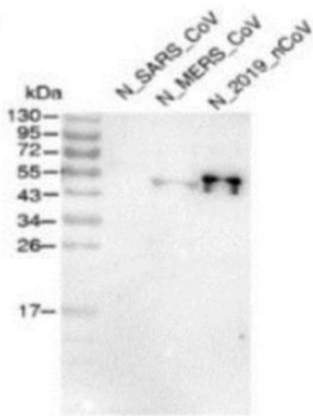
**Shipping:** Shipped on Dry Ice.

**Storage:** Store at -20°C.

**Regulatory/ Restrictions:** For *In vitro* laboratory use only. Not for any clinical, therapeutic, or diagnostic use in humans or animals. Not for animal or human consumption.

Applications	Suggested Dilution
Western Blot	0.1-1 µg/ml
Immunohistochemistry (not recommended without antigen retrieval)	
Indirect ELISA	0.2-2 µg/ml
Sandwich ELISA	2 µg/ml

## Applications



Western blot analysis of purified recombinant Nucleoproteins from SARS, MERS and SARS-CoV-2 using Anti-SARS-CoV-2 antibody. Primary antibody dilution used was 0.5-2 µg/ml.

**Western Blot Analysis** of purified recombinant Nucleoproteins from SARS, MERS and SARS-CoV-2 using Anti-SARS-CoV-2 NP Antibody [Clone 6F10] (BSV-COV-AB-08). Primary antibody concentration used was 0.1-1 µg/ml.