

Datasheet

Anti-ACE2 (Human) Monoclonal Antibody [Clone AC384] (Biotin)

Product Name	Anti-ACE2 Monoclonal Antibody [Clone AC384]
Catalogue Number	BSV-COV-AB-27
Pack Size	50 µg
Concentration	1 mg/ml
Clone, Isotype	Monoclonal AC384, Mouse IgG1κ
Format	IgG
Tested Applications	ELISA, Western Blot

Description:

Anti-ACE2 (Human) monoclonal antibody purified by Protein G. Optimal dilutions/concentrations should be determined by the researcher, individually for each application.

Product Details:

Specificity: Recognizes human ACE2.

Formulation: Liquid. 0.2µm-filtered solution in PBS, pH 7.4. Contains no preservatives.

Isotype: Mouse IgG1κ

Immunogen: The immunogen used to generate this antibody corresponds to recombinant human ACE2 Protein.

Buffer: PBS

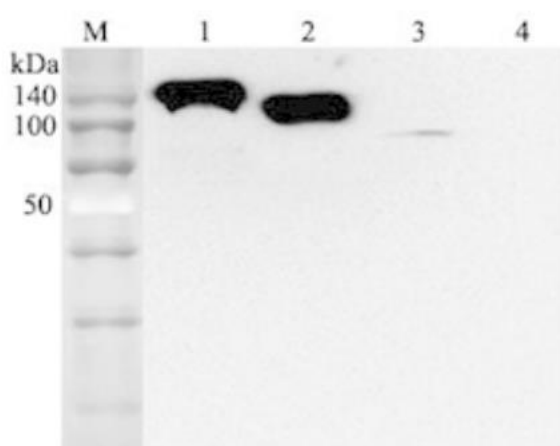
Label/Conjugates: Biotin

Storage: Store as concentrated solution. Centrifuge briefly prior to opening vial. For short-term storage, store at +4°C. For long-term storage, store at -20°C. After opening, prepare aliquots and store at -20°C. Avoid freeze/ thaw cycles.

Regulatory/ Restrictions: For laboratory use only. Not for any clinical, therapeutic, or diagnostic use in humans or animals.

Applications	Suggested Dilution
ELISA	1:2000-1:10000
Western Blot	1:2000-1:10000

Applications



Clone AC384 analysis using anti-ACE2 (human), mAb (AC384) by **Western Blot**.

Western Blot of ACE2 monoclonal antibody (BSV-COV-AB-27) at 1:2000 dilution. Lane 1: hACE2 (Fc protein), Lane 2: hACE2 (Ecto domain)

Lane 3: HepG2 cell lysate.

Lane 4: Other Fc-fusion (hGITR-Fc) proteins, acts as negative control.

Dilution used: 1:2000

References:

1. Development of an enzymatic assay for the detection of neutralizing antibodies against therapeutic angiotensin converting enzyme 2 (ACE2): K. Liao, et al.; J. Immunol. Meth. 389, 52 (2013)
2. Role of angiotensin-converting enzyme 2 (ACE2) in diabetic cardiovascular complications: VB. Patel, et al.; Clin. Sci. 126, 471 (2014).