

Datasheet

Anti-ACE2 (Human) Polyclonal Antibody

Product Name	Anti-ACE2 Polyclonal Antibody
Catalogue Number	BSV-COV-AB-28
Pack Size	100 µg
Concentration	1 mg/ml
Clone, Isotype	Polyclonal
Format	
Tested Applications	ELISA, Western Blot

Description:

Anti-ACE2 (Human) polyclonal antibody purified by Protein A. Optimal dilutions/concentrations should be determined by the researcher, individually for each application.

Product Details:

Specificity: Recognizes human ACE2. Detects a band of ~90kDa by Western blot.

Formulation: Liquid. 0.2 µm- filtered solution in PBS, pH 7.4. Contains no preservatives.

Host: Rabbit

Immunogen: The immunogen used to generate this antibody corresponds to recombinant human ACE2 Protein.

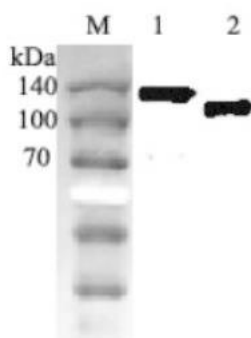
Buffer: PBS

Storage: Store as concentrated solution. Centrifuge briefly prior to opening vial. For short-term storage, store at +4°C. For long-term storage, store at -20°C. After opening, prepare aliquots and store at -20°C. Avoid freeze/ thaw cycles. Stable for at least 6 months after receipt when stored at -20°C.

Regulatory/ Restrictions: For laboratory use only. Not for any clinical, therapeutic, or diagnostic use in humans or animals.

Applications	Suggested Dilution
ELISA	1:2000-1:10000
Western Blot	1:2000-1:10000

Applications



Polyclonal Antibody analysis using anti-ACE2 (human), pAb by **Western Blot**.

Western Blot of anti-ACE2 (human) polyclonal antibody (BSV-COV-AB-28) at 1:2000 dilution. Lane1: hACE2 (Fc protein), Lane 2: hACE2 (ED)

Dilution used: 1:2000

References:

1. Conformational reorganization of the SARS coronavirus spike following receptor binding: implications for membrane fusion: D.R. Beniac, et al.; PLoS One 2, e1082 (2007)
2. Role of angiotensin-converting enzyme 2 (ACE2) in diabetic cardiovascular complications: VB. Patel, et al.; Clin. Sci. 126, 471 (2014)