

## Datasheet

### Elite Anti-SARS-CoV-2 Nucleocapsid Protein Monoclonal Antibody, Clone CON $\beta$ -2

Product Name	Elite Anti-SARS-CoV-2 Nucleocapsid Protein Monoclonal Antibody, Clone CON $\beta$ -2
Catalogue Number	BSV-N-02
Pack Size	25 $\mu$ g (Sample Size)/0.1mg/1mg
Concentration	2 mg/mL
Clone, Isotype	CON $\beta$ -2, IgG1 kappa
Format	IgG Monoclonal Antibody sterile in PBS
Tested Applications	Western Blot & ELISA
Additional Clones	CON $\alpha$ -1, CON $\gamma$ -3, CON $\delta$ -4, CON $\epsilon$ -5

#### Description:

Purified mouse monoclonal antibody (IgG) recognising the SARS-CoV-2 Nucleocapsid Protein (N), aa 1-419 region of SARS-CoV-2.

#### Product Details:

**Origin:** SARS-CoV-2 Nucleocapsid Protein (N) His-Tag (E. coli), aa 1-419

**Immunogen:** Full-Length Nucleocapsid protein region (F/LN Protein)

**Purification:** Protein G

**Host:** Mouse

**Fusion partner:** SP2/0 Mouse Myeloma

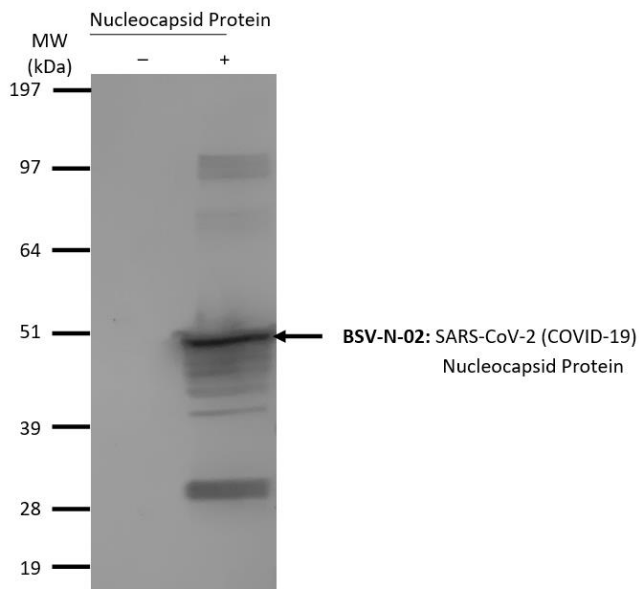
**Formulation:** 2 mg/ml, sterile in PBS, pH 7.4

**Shipping:** 4°C

**Storage:** -20°C to -80°C. Avoid repeated freezing and thawing.

**Production Capacity:** 10's grammes / month

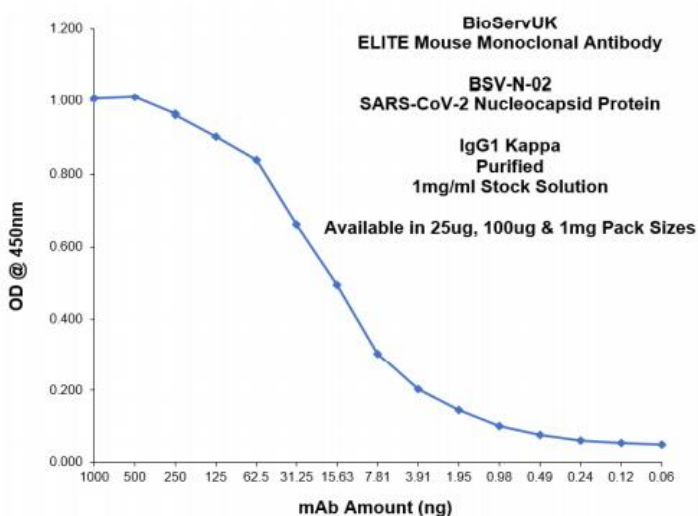
## Applications



### BSV-N-02 Western Blot Image

Full-length Nucleocapsid Protein (2 $\mu$ g) from COVID-19 (produced in *E. coli*) were separated by 10% SDS-PAGE, and the membrane was blotted with BSV-N-02 Elite Anti-SARS-CoV-2 (COVID-19) Nucleocapsid Protein (N) antibody diluted at 1:500 from a 1mg/ml sample. The alkaline phosphatase conjugated anti-mouse IgG antibody diluted at 1:2000 was used to detect the primary antibody.

**Dilution used:** 1:500



### BSV-N-02 ELISA: Titration

ELISA showing binding of antibody BSV-N-02 to immobilized SARS-CoV-2 Nucleocapsid Protein. Goat Anti-Mouse IgG (Fc specific)-HRP antibody diluted at 1:2000 was used to detect the primary antibody.

**BSV-N-02 LoD:** <10ng SARS-CoV-2 Nucleocapsid Protein