

Datasheet

Elite Anti-SARS-CoV-2 Nucleocapsid Protein Monoclonal Antibody, Clone CON γ -3

| | |
|---------------------|---|
| Product Name | Elite Anti-SARS-CoV-2 Nucleocapsid Protein Monoclonal Antibody, Clone CON γ -3 |
| Catalogue Number | BSV-N-03 |
| Pack Size | 25 μ g (Sample Size)/0.1mg/1mg |
| Concentration | 2 mg/mL |
| Clone, Isotype | CON γ -3, IgG1 kappa |
| Format | IgG Monoclonal Antibody sterile in PBS |
| Tested Applications | Western Blot & ELISA |
| Additional Clones | CON α -1, CON β -2, CON δ -4, CON ϵ -5 |

Description:

Purified mouse monoclonal antibody (IgG) recognising the SARS-CoV-2 Nucleocapsid Protein (N), aa 1-419 region of SARS-CoV-2.

Product Details:

Origin: SARS-CoV-2 Nucleocapsid Protein (N) His-Tag (E. coli), aa 1-419

Immunogen: Full-Length Nucleocapsid protein region (F/LN Protein)

Purification: Protein G

Host: Mouse

Fusion partner: SP2/0 Mouse Myeloma

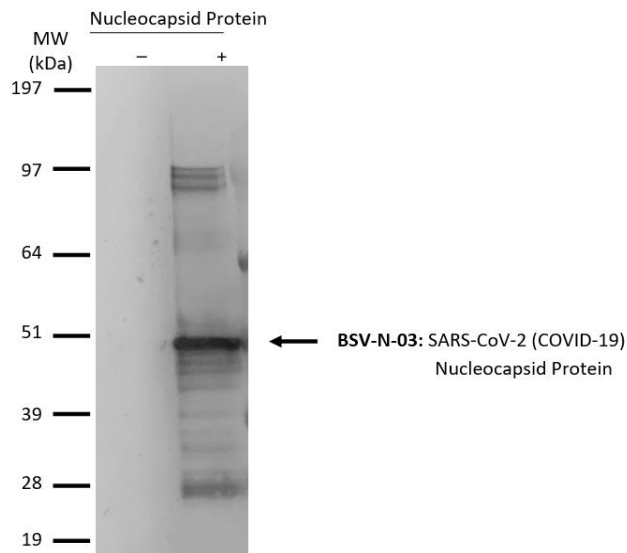
Formulation: 2 mg/ml, sterile in PBS, pH 7.4

Shipping: 4°C

Storage: -20°C to -80°C. Avoid repeated freezing and thawing.

Production Capacity: 10's grammes / month

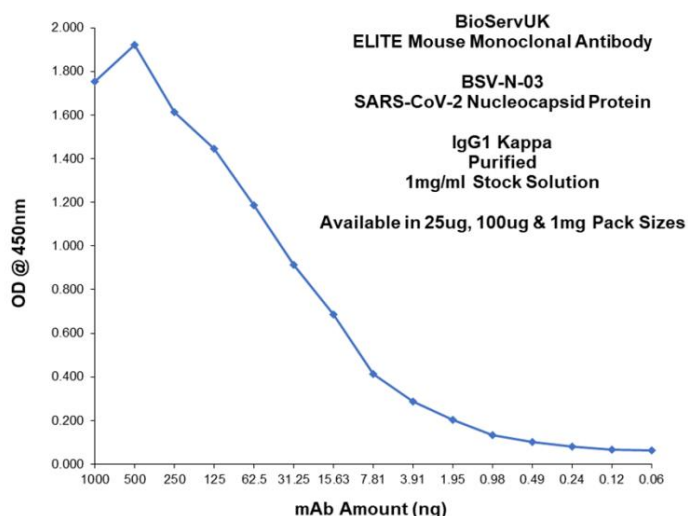
Applications



BSV-N-03 Western Blot Image

Full-length Nucleocapsid Protein (2 μ g) from COVID-19 (produced in *E. coli*) were separated by 10% SDS-PAGE, and the membrane was blotted with BSV-N-03 Elite Anti-SARS-CoV-2 (COVID-19) Nucleocapsid Protein antibody diluted at 1:500 from a 1mg/ml sample. The alkaline phosphatase conjugated anti-mouse IgG antibody diluted at 1:2000 was used to detect the primary antibody.

Dilution used: 1:500



BSV-N-03 ELISA: Titration

ELISA showing binding of antibody BSV-N-03 to immobilized SARS-CoV-2 Nucleocapsid Protein. Goat Anti-Mouse IgG (Fc specific)-HRP antibody diluted at 1:2000 was used to detect the primary antibody.

BSV-N-03 LoD: <10ng SARS-CoV-2 Nucleocapsid Protein