

Datasheet

SARS-CoV-2 (COVID-19) Spike (S2) Antibody [Clone 1A9]

Product Name	SARS-CoV-2 (COVID-19) Spike (S2) Antibody [Clone 1A9]
Catalogue Number	BSV-COV-AB-01
Clone, Isotype	Monoclonal 1A9, IgG1
Concentration	1 mg/ml
Format	IgG
Tested Applications	WB, ICC, IHC, FC

Description:

SARS-CoV/ SARS-CoV-2 (COVID-19) spike antibody purified by Protein G. Optimal dilutions/concentrations should be determined by the researcher.

Product Details:

Specificity: This antibody detects both SARS-CoV spike and SARS-CoV-2 spike proteins (S2 subunit). Our internal testing indicates no cross-reactivity with MERS-CoV spike protein.

Form in stock: Liquid. Concentration 1.0 mg/ml (Please refer to the vial label for the specific concentration.)

Host: Mouse

Immunogen: The immunogen is used to generate this antibody corresponds to SARS-CoV S10 (within S2 domain) protein (1029-1192 aa.).

Buffer: PBS

Purity: Affinity purified by Protein G

Conjugation: Unconjugated

Alternative names: SARS-CoV Spike, 2019-nCoV Spike, SARS-CoV-2 Spike, COVID-19 Spike.

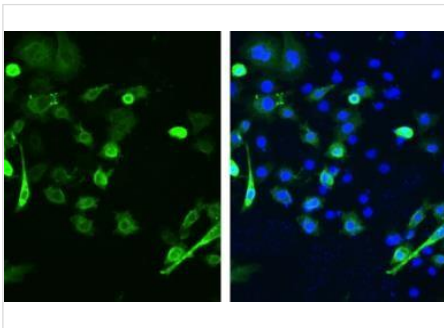
Shipping: Shipped on Dry Ice.

Storage: Store as concentrated solution. Centrifuge briefly prior to opening vial. For short-term storage (1-2 weeks), store at 4°C. For long-term storage, aliquot and store at -20°C or below. Avoid multiple freeze-thaw cycles.

Regulatory/ Restrictions: For laboratory use only. Not for any clinical, therapeutic, or diagnostic use in humans or animals.

Applications	Suggested Dilution
Western Blot	1:500 – 1:3000
Immunohistochemistry	1:100-1:2000
Immunofluorescence	1:100-1:2000
IHC-P	Assay dependent
ELISA	Assay dependent
FACS	Assay dependent
IP	Assay dependent

Applications

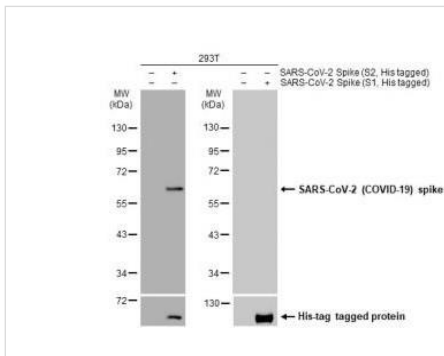


Immunofluorescent analysis. SARS-CoV / SARS-CoV-2 (COVID-19) spike antibody [1A9] detects SARS-CoV-2 (COVID-19) spike protein by immunofluorescent analysis.

Sample: BHK-21 cells transfected with full-length SARS-CoV-2 spike were fixed in 4% paraformaldehyde at RT for 30 min.

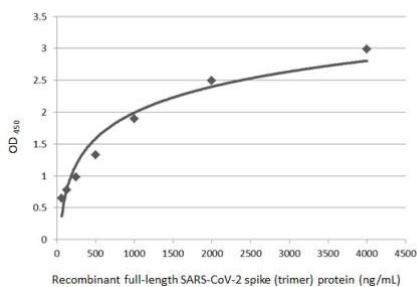
Green: SARS-CoV-2 (COVID-19) spike stained by SARS-CoV / SARS-CoV-2 (COVID-19) spike antibody [1A9] diluted at 1:2000.

Dilution started at: 1:2000



Western Blot. Non-transfected (-) and transfected (+) 293T whole cell extracts (30 µg) were separated by 10% SDS-PAGE, and the membrane was blotted with SARS-CoV / SARS-CoV-2 (COVID-19) spike antibody [1A9] diluted at 1:5000.

Dilution started at: 1:5000



Sandwich ELISA detection of recombinant full-length SARS-CoV-2 spike (trimer) protein using BSV-COV-AB-01 as capture antibody at concentration of 5 µg/mL and a detection antibody at concentration of 1 µg/mL. Rabbit IgG antibody (HRP) was diluted at 1:10000 and used to detect the primary antibody.

Dilution started at: 1:10000