

**Datasheet**

SARS-CoV-2 (COVID-19) Spike (S2) Antibody [Clone 1A9]

Product Name	SARS-CoV-2 (COVID-19) Spike (S2) Antibody [Clone 1A9]
Catalogue Number	BSV-COV-AB-02
Clone, Isotype	Monoclonal 1A9, IgG1
Concentration	1 mg/ml
Format	IgG
Tested Applications	WB, ICC, IHC, FC

**Description:**

SARS-CoV/ SARS-CoV-2 (COVID-19) spike antibody purified by Protein G. Optimal dilutions/concentrations should be determined by the researcher.

**Product Details:**

**Specificity:** This antibody detects both SARS-CoV spike and SARS-CoV-2 spike proteins (S2 subunit). Our internal testing indicates no cross-reactivity with MERS-CoV spike protein.

**Form in stock:** Liquid. Concentration 1.0 mg/ml. (Please refer to the vial label for the specific concentration.)

**Host:** Mouse

**Immunogen:** The immunogen is used to generate this antibody corresponds to SARS-CoV S10 (within S2 domain) protein (1029-1192 aa.).

**Buffer:** PBS

**Purity:** Affinity purified by Protein G

**Conjugation:** Unconjugated

**Alternative names:** SARS-CoV Spike, 2019-nCoV Spike, SARS-CoV-2 Spike, COVID-19 Spike.

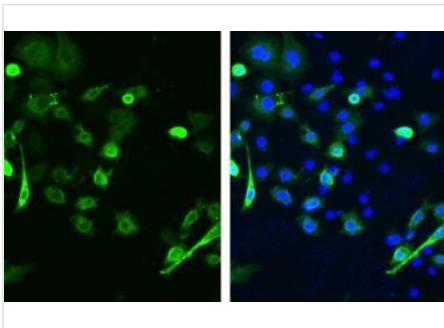
**Shipping:** Shipped on Dry Ice.

**Storage:** Store as concentrated solution. Centrifuge briefly prior to opening vial. For short-term storage (1-2 weeks), store at 4°C. For long-term storage, aliquot and store at -20°C or below. Avoid multiple freeze-thaw cycles.

**Regulatory/ Restrictions:** For laboratory use only. Not for any clinical, therapeutic, or diagnostic use in humans or animals.

Applications	Suggested Dilution
Western Blot	1:500 – 1:3000
Immunohistochemistry	1:100-1:2000
Immunofluorescence	1:100-1:2000
IHC-P	Assay dependent
ELISA	Assay dependent
FACS	Assay dependent
IP	Assay dependent

## Applications

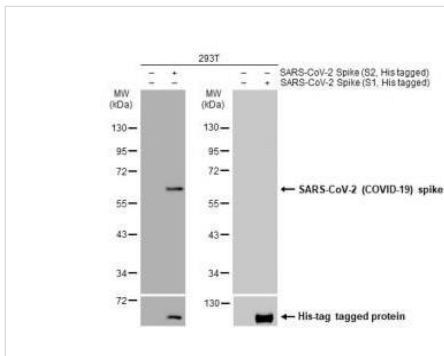


**Immunofluorescent analysis.** SARS-CoV / SARS-CoV-2 (COVID-19) spike antibody [1A9] detects SARS-CoV-2 (COVID-19) spike protein by immunofluorescent analysis.

Sample: BHK-21 cells transfected with full-length SARS-CoV-2 spike were fixed in 4% paraformaldehyde at RT for 30 min.

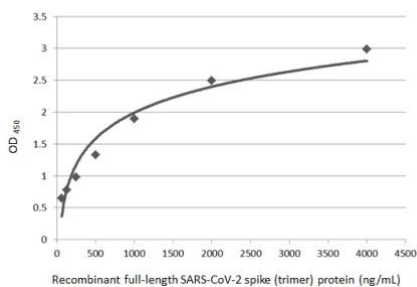
Green: SARS-CoV-2 (COVID-19) spike stained by SARS-CoV / SARS-CoV-2 (COVID-19) spike antibody [1A9] diluted at 1:2000.

**Dilution started at: 1:2000**



**Western Blot.** Non-transfected (-) and transfected (+) 293T whole cell extracts (30 µg) were separated by 10% SDS-PAGE, and the membrane was blotted with SARS-CoV / SARS-CoV-2 (COVID-19) spike antibody [1A9] diluted at 1:5000.

**Dilution started at: 1:5000**



**Sandwich ELISA** detection of recombinant full-length SARS-CoV-2 spike (trimer) protein using BSV-COV-AB-02 as capture antibody at concentration of 5 µg/ml and a detection antibody at concentration of 1 µg/ml. Rabbit IgG antibody (HRP) was diluted at 1:10000 and used to detect the primary antibody.

**Dilution started at: 1:10000**