

Datasheet

Anti-SARS-CoV-2 Antibody

Product Name	Anti-SARS-CoV-2 Antibody
Catalogue Number	BSV-COV-AB-07
Clone, Isotype	Polyclonal, IgG
Concentration	1 mg/ml
Format	IgG
Tested Applications	WB, IHC, Indirect ELISA, Sandwich ELISA

Description:

Previously named as COVID-19, Anti-SARS-CoV-2 antibody is rabbit polyclonal to detect nucleoprotein from SARS-CoV-2 with minimal crossreactivity to MERS-CoV

Product Details:

Form in stock: Liquid. Concentration 0.1 mg/mL. (Please refer to the vial label for the specific concentration.)

Host: Rabbit

Immunogen: Synthetic peptide targeting amino acids 1-100 of SARS-CoV-2 nucleoprotein.

Clonality: Polyclonal

Isotype: IgG

Buffer: In 0.01 M Tris-HCl, pH 8.0, 0.15 M NaCl, 0.02% sodium azide.

Purity: > 95% based on SDS-PAGE

Conjugation: Unconjugated

Alternative names: COVID-19 COV-2.

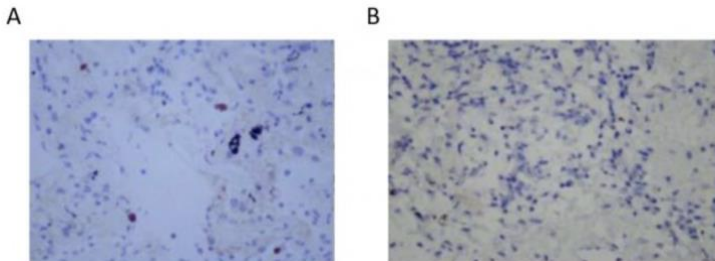
Shipping: Shipped on Dry Ice.

Storage: Store at -20°C. Product is stable for 6 weeks at 2-8 °C as undiluted liquid. Prepare fresh dilutions for every new experiment. Avoid freeze/thaw cycles.

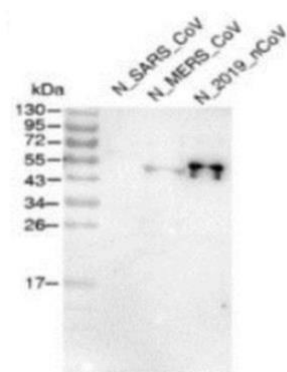
Regulatory/ Restrictions: For Research Use Only.

Applications	Suggested Dilution
Western Blot	0.5-2 ug/ml
Immunohistochemistry (not recommended without antigen retrieval)	2-10 ug/ml
Indirect ELISA	1-2 ug/ml
Sandwich ELISA	2 ug/ml

Applications



Immunohistochemistry analysis of patient lung biopsy samples infected with SARS-CoV-2. A: Diagnosed with non-specific lung infection. B: using Anti-SARS-CoV-2 NP antibody (BSV-COV-AB-07). Antibody concentration used was 2-10µg/ml and HRP-conjugated Goat Anti-Rabbit IgG was used as secondary antibody.



Western Blot analysis of purified recombinant Nucleoprotein from SARS-CoV-2 using Anti-SARS-CoV-2 NP antibody (BSV-COV-AB-07). Primary antibody dilution used was 0.5-2µg/ml.

Western blot analysis of purified recombinant Nucleoproteins from SARS, MERS and SARS-CoV-2 using Anti-SARS-CoV-2 antibody. Primary antibody dilution used was 0.5-2 µg/ml.