

Datasheet

SARS-CoV-2 Nucleocapsid Protein Monoclonal Antibody (7E1B)

Product Name	SARS-CoV-2 Nucleocapsid Protein Monoclonal Antibody (7E1B)
Catalogue Number	BSV-COV-AB-16
Clone, Isotype	Monoclonal 7E1B, IgG2b
Concentration	≥1 µg/µl
Format	IgG
Tested Applications	WB, ELISA

Description:

Purified mouse monoclonal antibody (IgG2b) raised against recombinant Nucleocapsid Protein (NP) from SARS-CoV-2 (COVID-19).

Product Details:

Host: Mouse

Clone: 7E1B

Specificity: 2019-nCoV CoV Nucleocapsid

Clonality: Monoclonal

Isotype: IgG2b

Purification: Purified by Protein G

Concentration: ≥1 µg/µl

Conjugation: Unconjugated

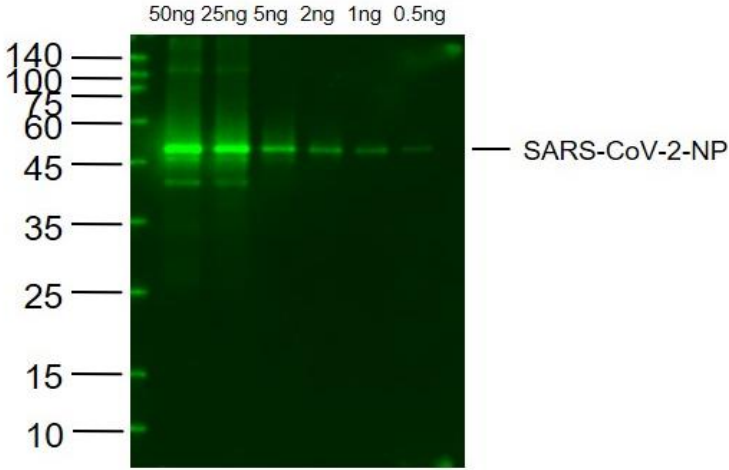
Shipping: This antibody is shipped at ambient temperature.

Storage: Aqueous buffered solution containing 0.01M PBS (pH7.4) with 0.1% Proclin300. Store at -20°C for 12 months.

Regulatory/ Restrictions: For Research Use Only.

Applications	Suggested Dilution
Western blot	1:300 – 1:1000
ELISA	1:500 – 1:1000

Applications



Western Blot

Lane 1: SARS-CoV-2 N protein at 50ng
Lane 2: SARS-CoV-2 N protein at 25ng
Lane 3: SARS-CoV-2 N protein at 5ng
Lane 4: SARS-CoV-2 N protein at 2ng
Lane 5: SARS-CoV-2 N protein at 1ng
Lane 6: SARS-CoV-2 N protein at 0.5ng
probed with SARS-CoV-2 N protein
monoclonal Antibody, Unconjugated at
1:1000 dilution and 4°C overnight
incubation. Followed by conjugated
secondary antibody incubation at 1:20000
for 60 min at 37°C.