

Datasheet

Recombinant Anti-SARS-CoV-2 Spike Protein S1, Recombinant Monoclonal Antibody (blocking) [Covi-1] (preservative free).

Product Name	Recombinant Anti-SARS-CoV-2 Spike (S1) Monoclonal Antibody [Clone Covi-1]
Catalogue Number	BSV-COV-AB-29
Pack Size	100 µg
Concentration	1 mg/ml
Clone, Isotype	Covi-1, IgG1
Format	IgG
Tested Applications	ELISA, Western Blot, Functional Application

Description:

Recombinant Anti-SARS-CoV-2 Spike (S1) Monoclonal Antibody [Covi-1] ≥98% purity by SDS-PAGE.

Product Details:

Specificity: Recognizes and binds to recombinant SARS-CoV-2 Spike Protein S1. It blocks the interaction of SARS-CoV-2 Spike Protein S1 (RBD) to human ACE2. Detects a different epitope as anti-SARS-CoV-2 Spike Protein S1, mAb (rec.) (blocking) (Covi-2).

Form in stock: Liquid. In PBS

Host: HEK 293 cells

Immunogen: The immunogen used to generate this antibody corresponds to recombinant SARS-CoV-2 Spike Protein S1 receptor binding domain.

Purity: ≥98% (SDS-PAGE)

Buffer: PBS

Label/Conjugates: Preservative Free

Alternative Names: COVID-19 COV-2

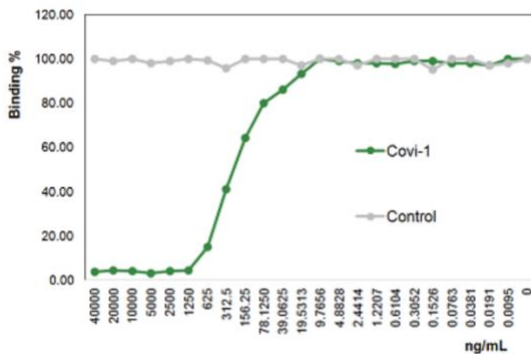
Shipping: This antibody is shipped as liquid solution at ambient temperature.

Storage: Store as concentrated solution. Centrifuge briefly prior to opening vial. For short-term storage, store at +4°C. For long-term storage, store at -20°C. After opening, prepare aliquots and store at -20°C. Avoid freeze/ thaw cycles. Stable for at least 1 year after receipt when stored at -20°C.

Regulatory/ Restrictions: For laboratory use only. Not for any clinical, therapeutic, or diagnostic use in humans or animals.

Applications	Suggested Dilution
ELISA	Assay Dependent
Western Blot	1:1000
Functional Application	Blocking

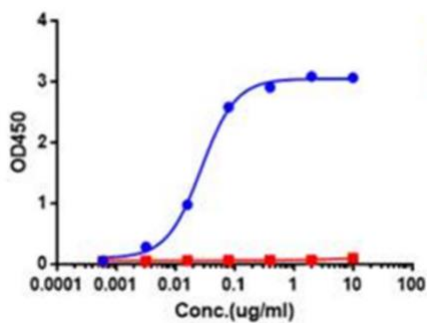
Applications



Clone Covi-1 inhibits the binding of hACE2 to the Spike protein of SARS-CoV-2 by ELISA.

SARS-CoV-2 Spike Protein S1 is coated on an ELISA plate at 1ug/ml. SARS-CoV-2 Spike Protein S1, mAb (blocking) [Covi-1] (BSV-COV-AB-29) or an unrelated recombinant mAb (control) is added together with 500ng/ul of hACE (Biotin). After incubation for 1h at 37°C, the binding is detected using Streptavidin (HRP).

Dilution starting at: 40µg/ml with a two-fold serial dilution



Clone Covi-1 assaying with SARS-CoV-2 S1 Protein by ELISA.

ELISA binding assay with SARS-CoV-2 S1 Protein (RBD) (His) using anti-SARS-CoV-2 Spike Protein (S1), mAb [Covi-1] (BSV-COV-AB-29) (blue line) and an unrelated antibody as negative control (red line).